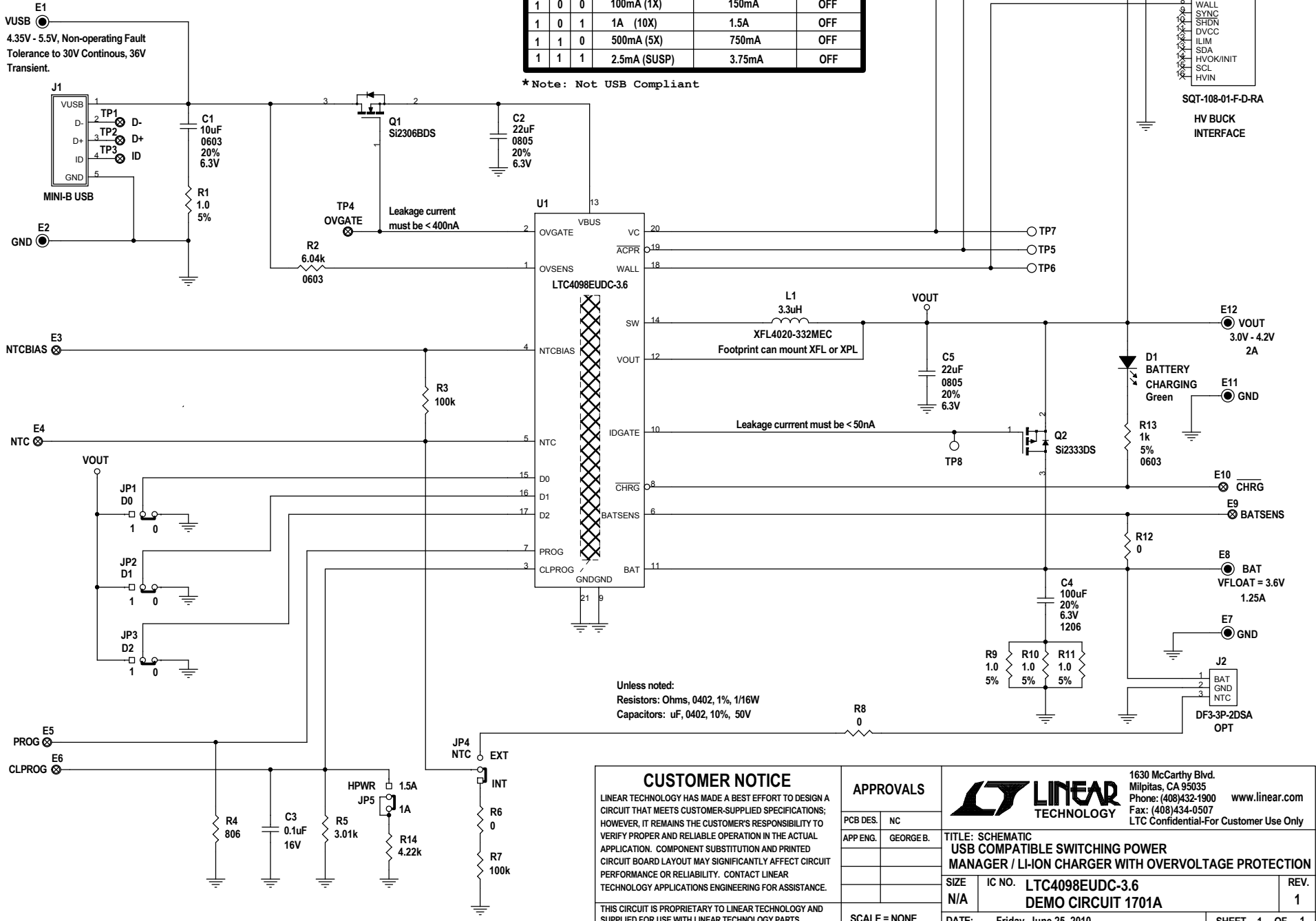


INPUT CURRENT LIMIT SETTINGS

D2	D1	D0	Input Limit Current JP5 (HPWR) = 1A	Input Limit Current JP5 (HPWR) = 1.5A *	CHARGER STATUS
0	0	0	100mA (1X)	150mA	ON
0	0	1	1A (10X)	1.5A	ON
0	1	0	500mA (5X)	750mA	ON
0	1	1	500uA (SUSP)	750uA	OFF
1	0	0	100mA (1X)	150mA	OFF
1	0	1	1A (10X)	1.5A	OFF
1	1	0	500mA (5X)	750mA	OFF
1	1	1	2.5mA (SUSP)	3.75mA	OFF

*Note: Not USB Compliant

REVISION HISTORY				
ECO	REV	DESCRIPTION	APPROVED	DATE
-	1	PRODUCTION FAB	GEORGE.B.	05-06-10



Unless noted:
Resistors: Ohms, 0402, 1%, 1/16W
Capacitors: uF, 0402, 10%, 50V

CUSTOMER NOTICE
LINEAR TECHNOLOGY HAS MADE A BEST EFFORT TO DESIGN A CIRCUIT THAT MEETS CUSTOMER-SUPPLIED SPECIFICATIONS; HOWEVER, IT REMAINS THE CUSTOMER'S RESPONSIBILITY TO VERIFY PROPER AND RELIABLE OPERATION IN THE ACTUAL APPLICATION. COMPONENT SUBSTITUTION AND PRINTED CIRCUIT BOARD LAYOUT MAY SIGNIFICANTLY AFFECT CIRCUIT PERFORMANCE OR RELIABILITY. CONTACT LINEAR TECHNOLOGY APPLICATIONS ENGINEERING FOR ASSISTANCE.
THIS CIRCUIT IS PROPRIETARY TO LINEAR TECHNOLOGY AND SUPPLIED FOR USE WITH LINEAR TECHNOLOGY PARTS.

APPROVALS	
PCB DES.	NC
APP ENG.	GEORGE.B.
SCALE = NONE	

		1630 McCarthy Blvd. Milpitas, CA 95035 Phone: (408)432-1900 www.linear.com Fax: (408)434-0507 LTC Confidential-For Customer Use Only	
		TITLE: SCHEMATIC USB COMPATIBLE SWITCHING POWER MANAGER / LI-ION CHARGER WITH OVERVOLTAGE PROTECTION	
SIZE	IC NO.	REV.	
N/A	LTC4098EUDC-3.6	1	
DEMO CIRCUIT 1701A		DATE: Friday, June 25, 2010	
SHEET 1 OF 1			